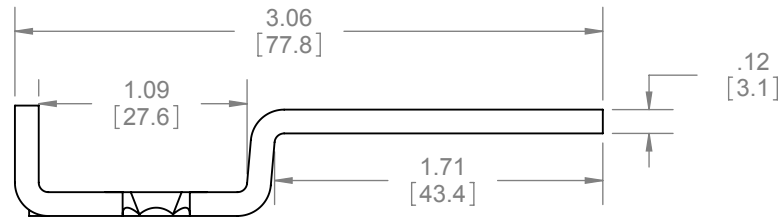
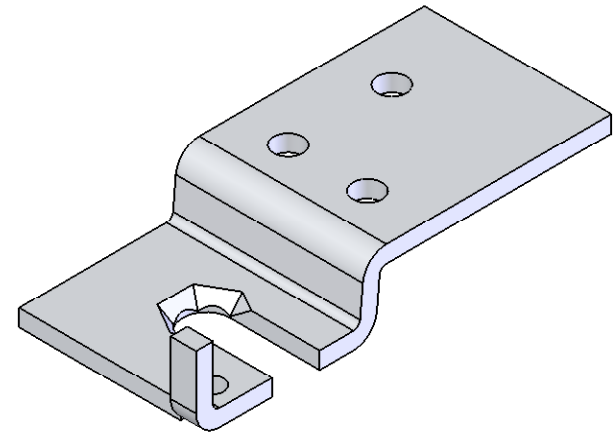
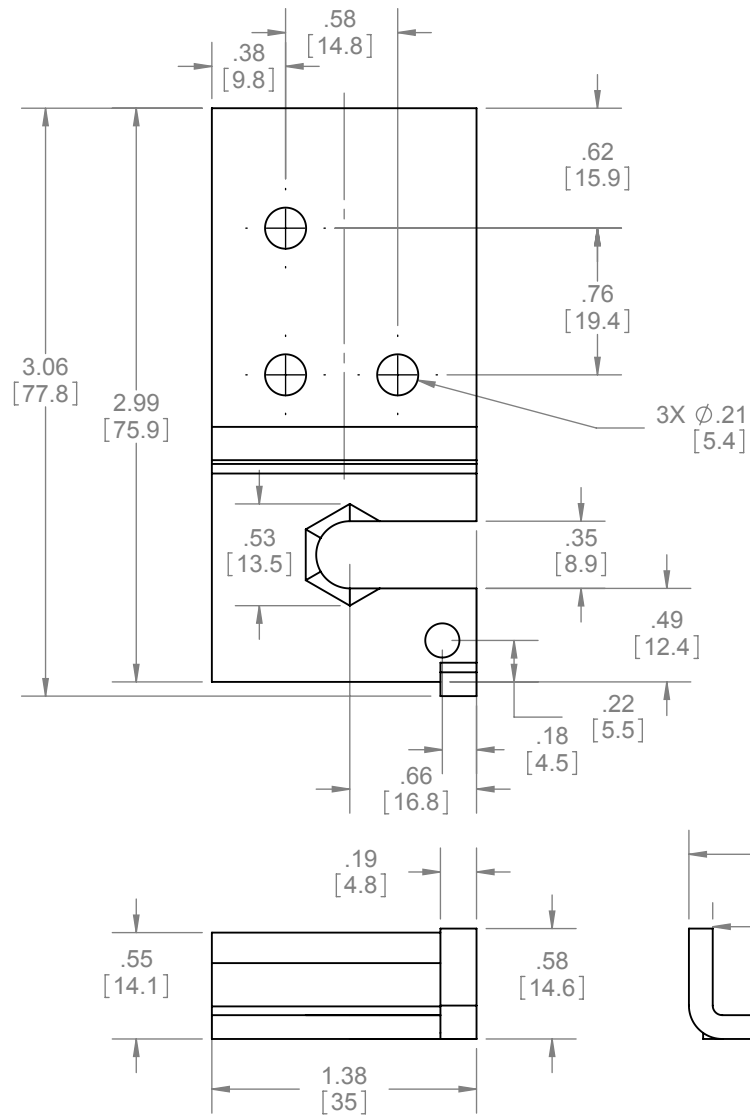


REVISIONS		
REV.	DESCRIPTION	DATE
01	NEW DRAWING FOR WEB	3/20/2008



NOTES:
 - USED TO ATTACH DOOR TO HANGER
 - USED IN CONJUNCTION WITH 9572, 9605, 9606, 9704 AND 9816 HANGER

HARDWARE INCLUDED:
 - 4PCS #8-32 x 1" CROSS PAN HEAD SCREW W/ WHITE PAINTED HEAD



PROPRIETARY & CONFIDENTIAL
 THE INFORMATION CONTAINED IN THIS DRAWING IS THE SOLE PROPERTY OF HAGER COMPANIES. ANY REPRODUCTION IN PART OR AS A WHOLE WITHOUT THE WRITTEN PERMISSION OF HAGER COMPANIES IS PROHIBITED.

HAGER RESERVES THE RIGHT TO MAKE DESIGN CHANGES WITHOUT NOTICE. CALL HAGER ENGINEERING AT 1-800-325-9995 FOR THE LATEST REVISION DATE OF TEMPLATE.

MATERIAL	STEEL	DRAWN	NJANSEN	12/11/2007
	FINISH	ZINC PLATED	ENG. APPR.	M MCRAE
DO NOT SCALE DRAWING		Q.A.		
		TOLERANCES: FRACTIONAL: ±0.015" ANGULAR: MACH: ±1° BEND: ±1° TWO PLACE DECIMAL: ±0.01" THREE PLACE DECIMAL: ±0.004"		

9609 TOP DOOR PLATE		SIZE	DWG. NO.	REV.
		A	S-SD00032	01
SCALE: 1:1	WEIGHT: 0.15	SHEET 1 OF 1		